

Location :

The block is divided by the Nile Valley and close to Beni Suef city.

Total Area: 5060 km²

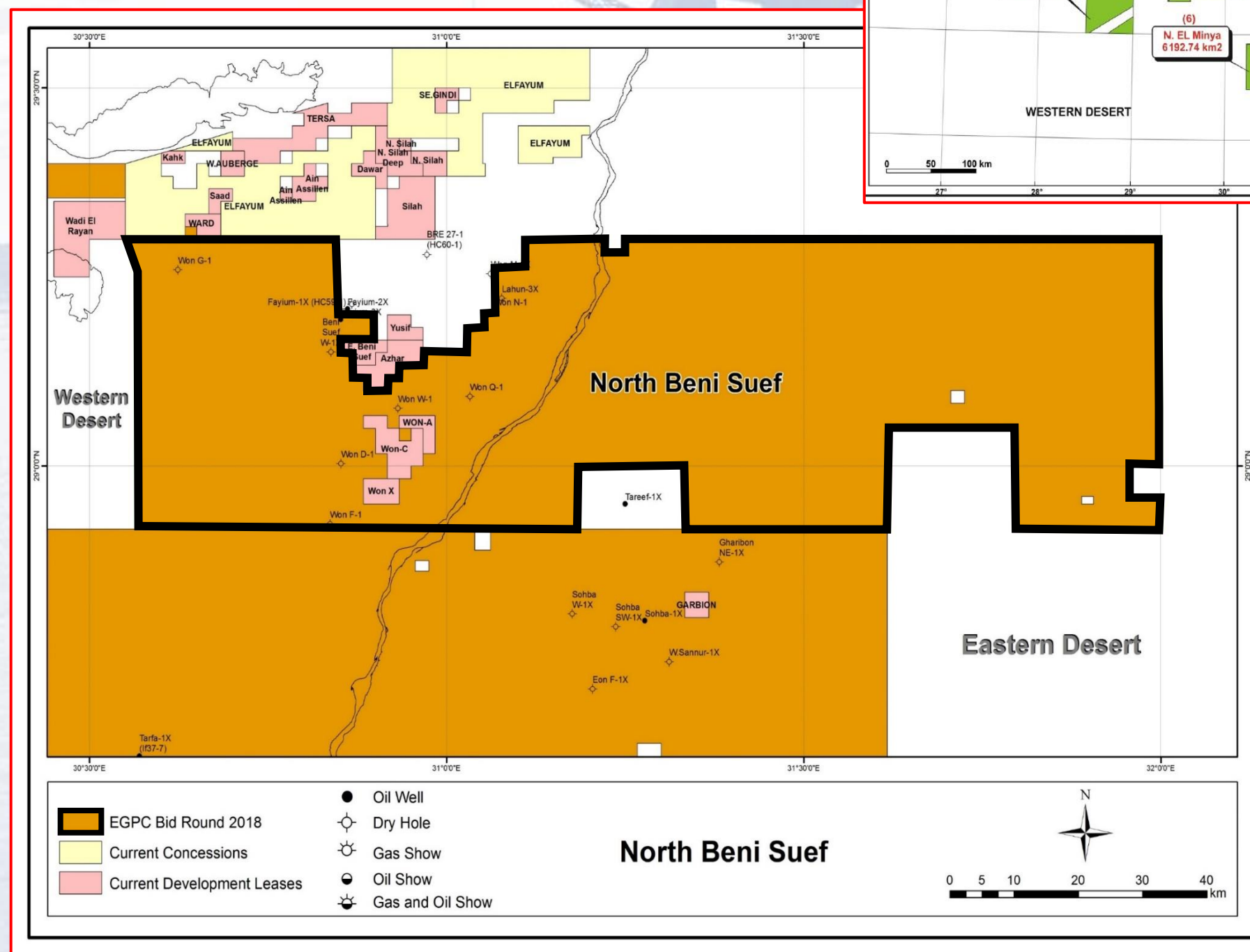
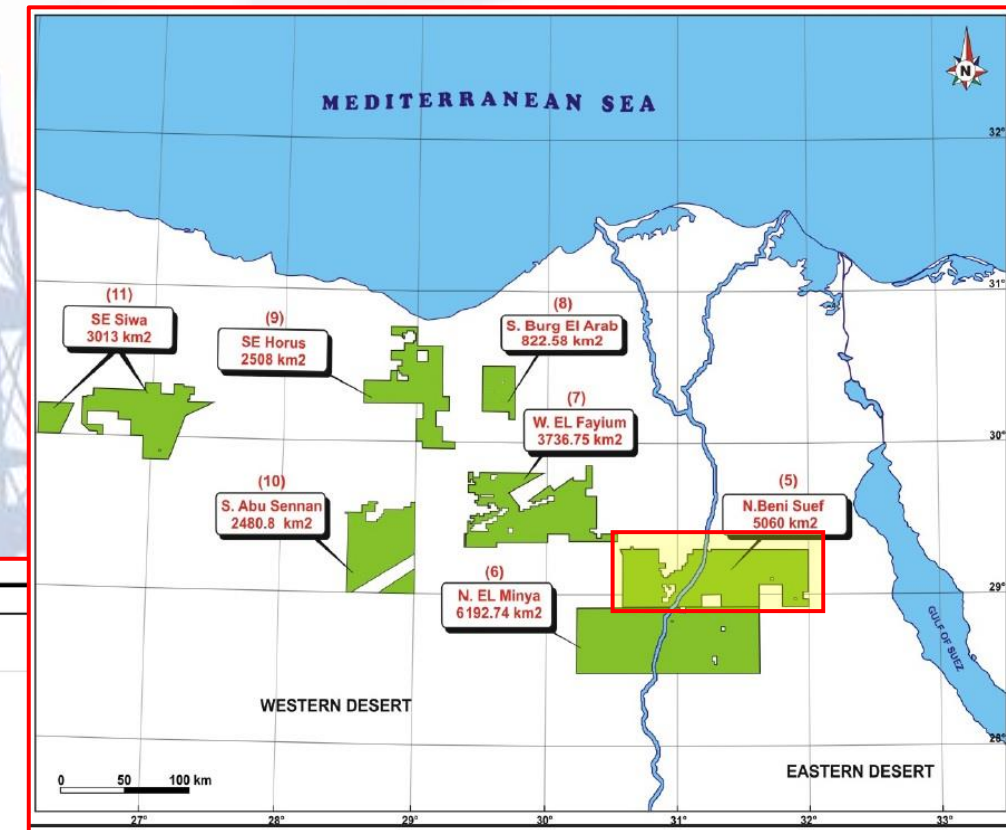
Previous Concessionaire: Apache

2D Seismic Survey: 3101 Km

3D Seismic Survey: 841 Km²

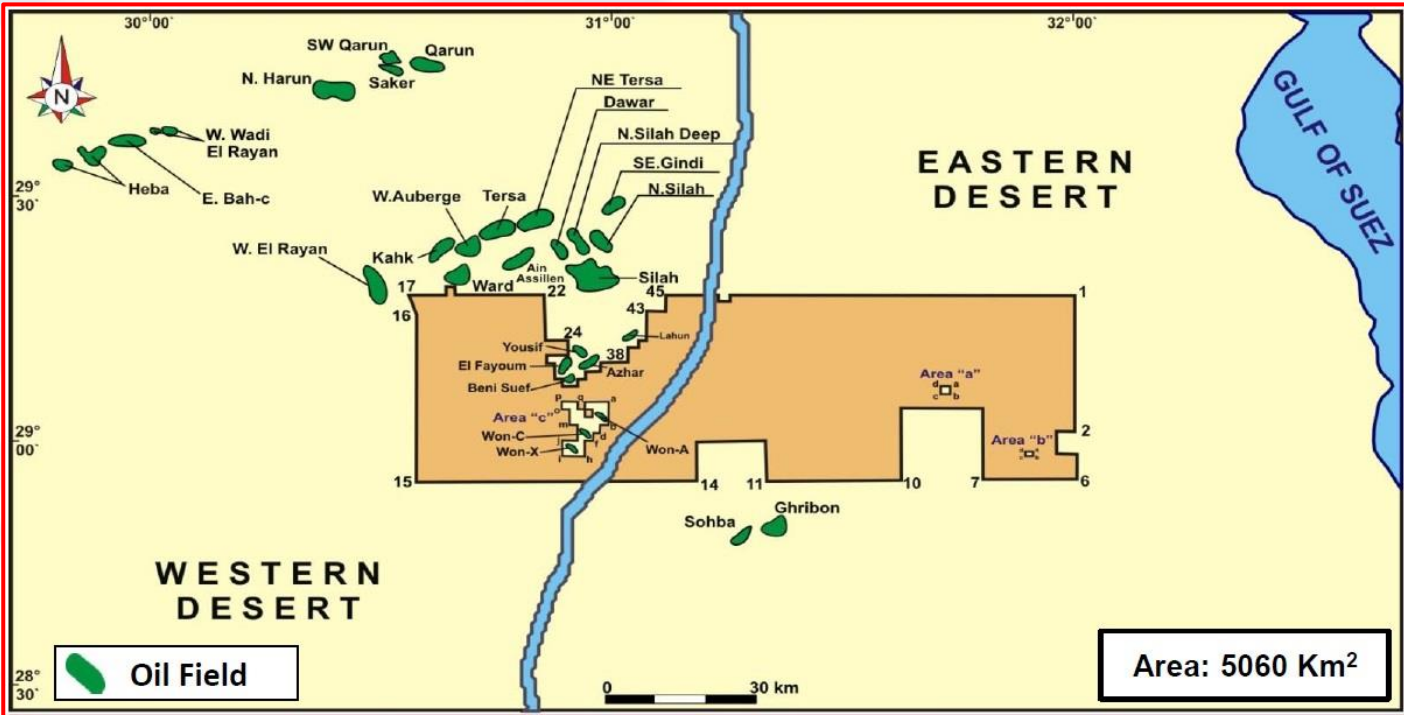
Drilled Wells: 8 Wells

Range of wells TD: from 6397 ft. to 8908 ft.



5. North Beni Suef 2018 BID ROUND BLOCKS

Block Coordinates



Geographic Coordinate System used: Egypt 1907
 Angular Unit: Degree
 Radians per unit: 0.0174532925199433
 Prime Meridian: Greenwich, Longitude (00° 001 00.0011)
 Datum: Egypt 1907
 Spheroid: Helmert 1906
 Semi major Axis: 6378200.0
 Semi minor Axis: 6356818.169627891
 Inverse Flattening: 298.3

Coordinates			
LAT.	LONG.	LAT.	LONG.
1- 29° 18' 00.00"	32° 00' 00.00"	32- 29° 06' 00.00"	30° 55' 00.00"
2- 29° 00' 10.00"	32° 00' 00.00"	33- 29° 07' 00.00"	30° 55' 00.00"
3- 29° 00' 10.00"	31° 57' 20.00"	34- 29° 07' 00.00"	30° 56' 00.00"
4- 28° 57' 20.00"	31° 57' 20.00"	35- 29° 08' 00.00"	30° 56' 00.00"
5- 28° 57' 20.00"	32° 00' 00.00"	36- 29° 08' 00.00"	30° 58' 00.00"
6- 28° 55' 00.00"	32° 00' 00.00"	37- 29° 09' 05.00"	30° 58' 00.00"
7- 28° 55' 00.00"	31° 47' 53.00"	38- 29° 09' 05.00"	31° 01' 35.00"
8- 29° 03' 04.80"	31° 47' 53.00"	39- 29° 11' 00.00"	31° 01' 35.00"
9- 29° 03' 04.80"	31° 37' 06.00"	40- 29° 11' 00.00"	31° 03' 00.00"
10- 28° 55' 00.00"	31° 37' 06.00"	41- 29° 12' 00.00"	31° 03' 00.00"
11- 28° 55' 00.00"	31° 20' 00.00"	42- 29° 12' 00.00"	31° 04' 00.00"
12- 29° 00' 00.00"	31° 20' 00.00"	43- 29° 15' 50.00"	31° 04' 00.00"
13- 29° 00' 00.00"	31° 11' 00.00"	44- 29° 15' 50.00"	31° 06' 25.00"
14- 28° 55' 00.00"	31° 11' 00.00"	45- 29° 18' 00.00"	31° 06' 25.00"
15- 28° 55' 00.00"	30° 34' 00.00"	46- 29° 18' 00.00"	31° 13' 20.00"
16- 29° 15' 26.00"	30° 34' 00.00"	47- 29° 17' 00.00"	31° 13' 20.00"
17- 29° 18' 00.00"	30° 33' 00.00"	48- 29° 17' 00.00"	31° 14' 53.00"
18- 29° 18' 00.00"	30° 38' 00.00"	49- 29° 18' 00.00"	31° 14' 53.00"
19- 29° 19' 00.00"	30° 38' 00.00"		
20- 29° 19' 00.00"	30° 39' 00.00"		
21- 29° 18' 00.00"	30° 39' 00.00"		
22- 29° 18' 00.00"	30° 50' 42.00"		
23- 29° 12' 00.00"	30° 50' 42.00"		
24- 29° 12' 00.00"	30° 53' 50.00"		
25- 29° 10' 00.00"	30° 53' 50.00"		
26- 29° 10' 00.00"	30° 51' 00.00"		
27- 29° 09' 00.00"	30° 51' 00.00"		
28- 29° 09' 00.00"	30° 52' 00.00"		
29- 29° 07' 00.00"	30° 52' 00.00"		
30- 29° 07' 00.00"	30° 53' 00.00"		
31- 29° 06' 00.00"	30° 53' 00.00"		

Excluded Areas			
Area "a"			
LAT.	LONG.	LAT.	LONG.
a- 29° 06' 00.00"	31° 43' 30.00"		
b- 29° 05' 00.00"	31° 43' 30.00"		
c- 29° 05' 00.00"	31° 42' 20.00"		
d- 29° 06' 00.00"	31° 42' 20.00"		

Area "b"	
LAT.	LONG.
a- 28° 57' 35.00"	31° 54' 20.00"
b- 28° 57' 00.00"	31° 54' 20.00"
c- 28° 57' 00.00"	31° 53' 20.00"
d- 28° 57' 35.00"	31° 53' 20.00"

Area "c"	
LAT.	LONG.
a- 29° 04' 00.00"	30° 59' 00.00"
b- 29° 01' 00.00"	30° 59' 00.00"
c- 29° 01' 00.00"	30° 58' 00.00"
d- 29° 00' 00.00"	30° 58' 00.00"
e- 29° 00' 00.00"	30° 57' 00.00"
f- 28° 59' 00.00"	30° 57' 00.00"
g- 28° 59' 00.00"	30° 56' 00.00"
h- 28° 57' 00.00"	30° 56' 00.00"
i- 28° 57' 00.00"	30° 53' 00.00"
j- 28° 59' 00.00"	30° 53' 00.00"
k- 29° 59' 00.00"	30° 55' 00.00"
l- 29° 01' 00.00"	30° 55' 00.00"
m- 29° 01' 00.00"	30° 54' 00.00"
n- 29° 03' 00.00"	30° 54' 00.00"
o- 29° 03' 00.00"	30° 53' 00.00"
p- 29° 04' 00.00"	30° 53' 00.00"
q- 29° 04' 00.00"	30° 55' 00.00"
r- 29° 03' 00.00"	30° 55' 00.00"
s- 29° 03' 00.00"	30° 56' 00.00"
t- 29° 02' 00.00"	30° 56' 00.00"
u- 29° 02' 00.00"	30° 57' 00.00"
v- 29° 03' 00.00"	30° 57' 00.00"
w- 29° 03' 00.00"	30° 56' 00.00"
x- 29° 04' 00.00"	30° 56' 00.00"



5

NORTH BENI SUEF WELLS

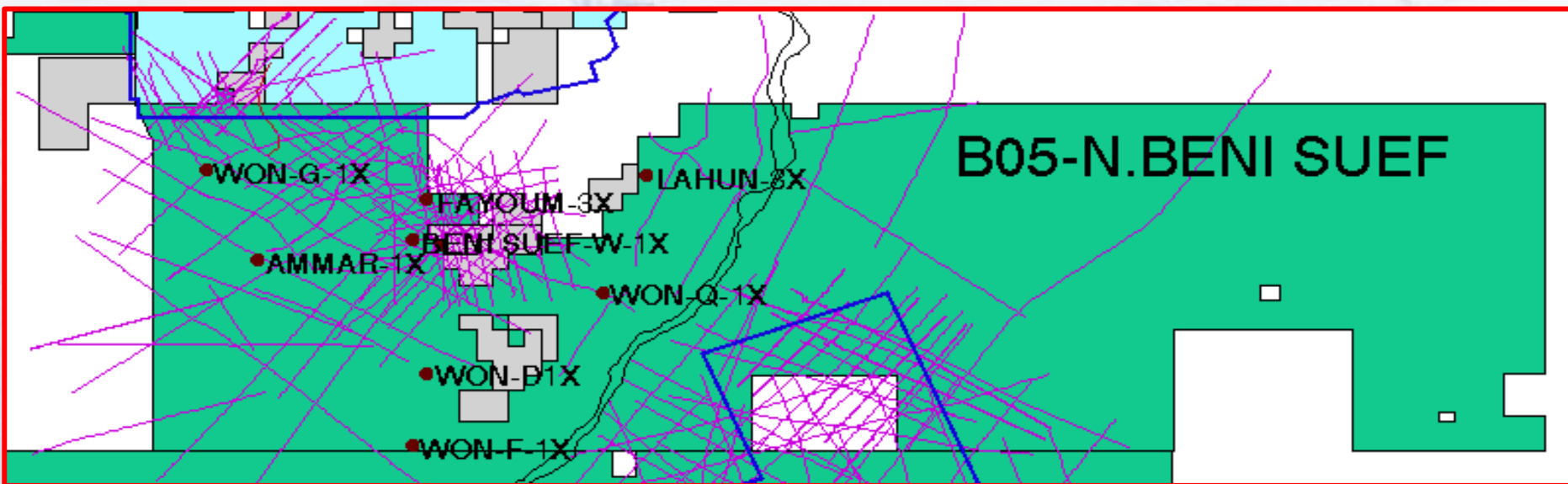
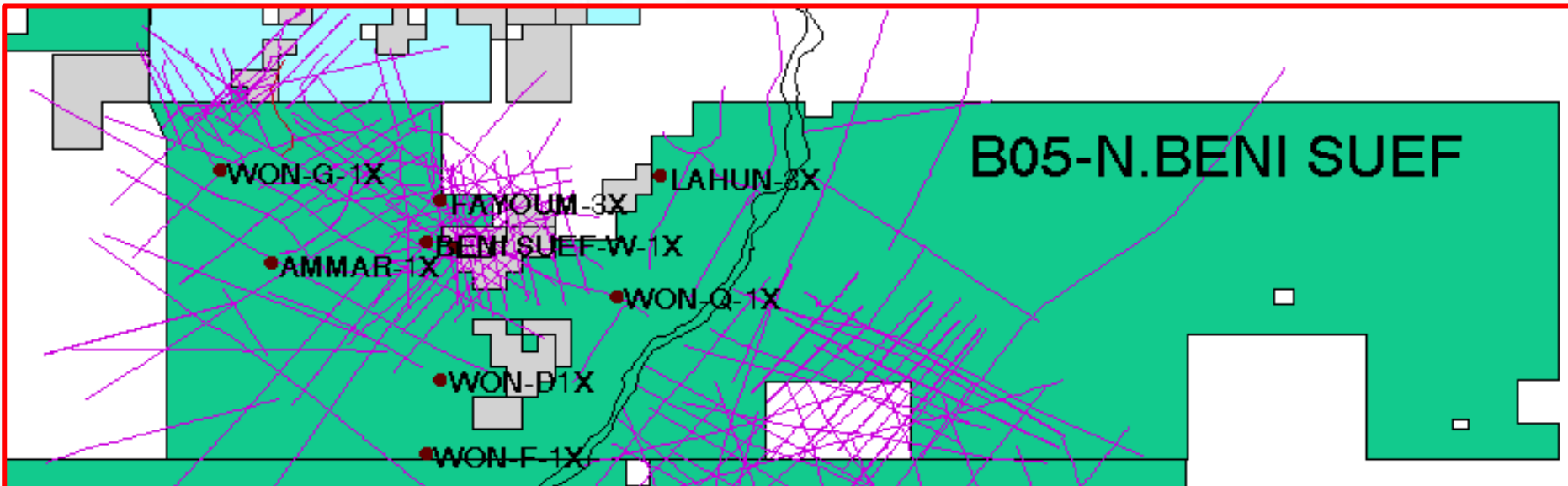
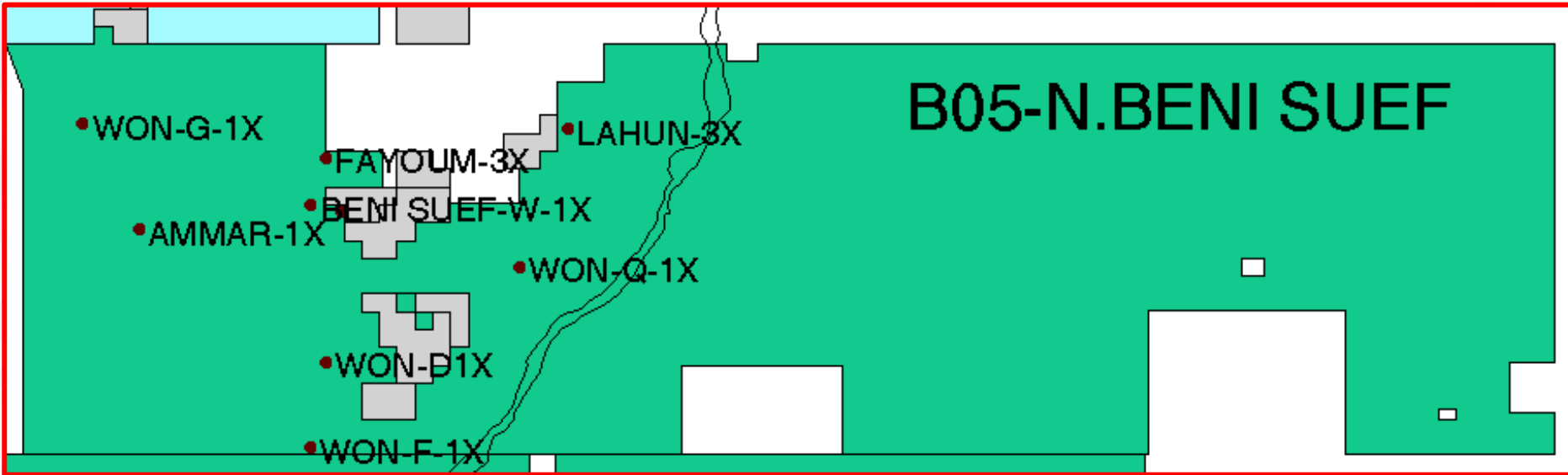
NO.	WELL NAME / NEW NAME	COMPANY	SPUD. DATE COMP. DATE	LAT. LONG.	T. D. FEET	FORMATION REACHED	FINAL STATUS
1	<i>BENI SUEF W-1X</i>	<i>APACHE</i>	<i>06/05/2001 22/05/2011</i>	<i>29° 09' 03.3" 30° 50' 16.3"</i>	<i>08,575</i>	<i>KHARITA</i>	<i>P & A (Oil shows in Cretaceous)</i>
2	<i>WON D-1</i>	<i>APACHE</i>	<i>11/02/2015 01/03/2015</i>	<i>29° 00' 12.5" 30° 51' 07.2"</i>	<i>08,908</i>	<i>U. KHARITA</i>	<i>P & A NON COMMERCIAL</i>
3	<i>WON F-1</i>	<i>APACHE</i>	<i>01/10/2014 31/10/2014</i>	<i>28° 55' 25.0" 30° 50' 11.9"</i>	<i>07,600</i>	<i>BASEMENT</i>	<i>P & A</i>
4	<i>WON Q-1</i>	<i>APACHE</i>	<i>01/09/2014 04/10/2014</i>	<i>29° 05' 31.6" 31° 01' 57.1"</i>	<i>09,700</i>	<i>U. KHARITA</i>	<i>T & A NON COMMERCIAL</i>
5	<i>WON G-1</i>	<i>APACHE</i>	<i>01/03/2014 06/04/2014</i>	<i>29° 13' 34.8" 30° 37' 25.2"</i>	<i>8240</i>	<i>BASEMENT</i>	<i>P & A</i>
6	<i>FAYIUM -3X</i>	<i>APACHE</i>	<i>22/04/2011 06/05/2011</i>	<i>29° 11' 40.1" 30° 51' 05.9"</i>	<i>07,700</i>	<i>U. KHARITA</i>	<i>OIL PRODUCER</i>
7	<i>LAHUN -3X</i>	<i>APACHE</i>	<i>11/10/2010 27/10/2010</i>	<i>29° 13' 18.4" 31° 04' 37.9"</i>	<i>06,397</i>	<i>BASEMENT</i>	<i>P & A</i>
8	<i>AMMAR-1X</i>	<i>APACHE</i>	<i>22/07/2004 15/08/2004</i>	<i>29° 07' 39.0" 31° 40' 34.7"</i>	<i>08,682</i>	<i>BASEMENT</i>	<i>P & A</i>



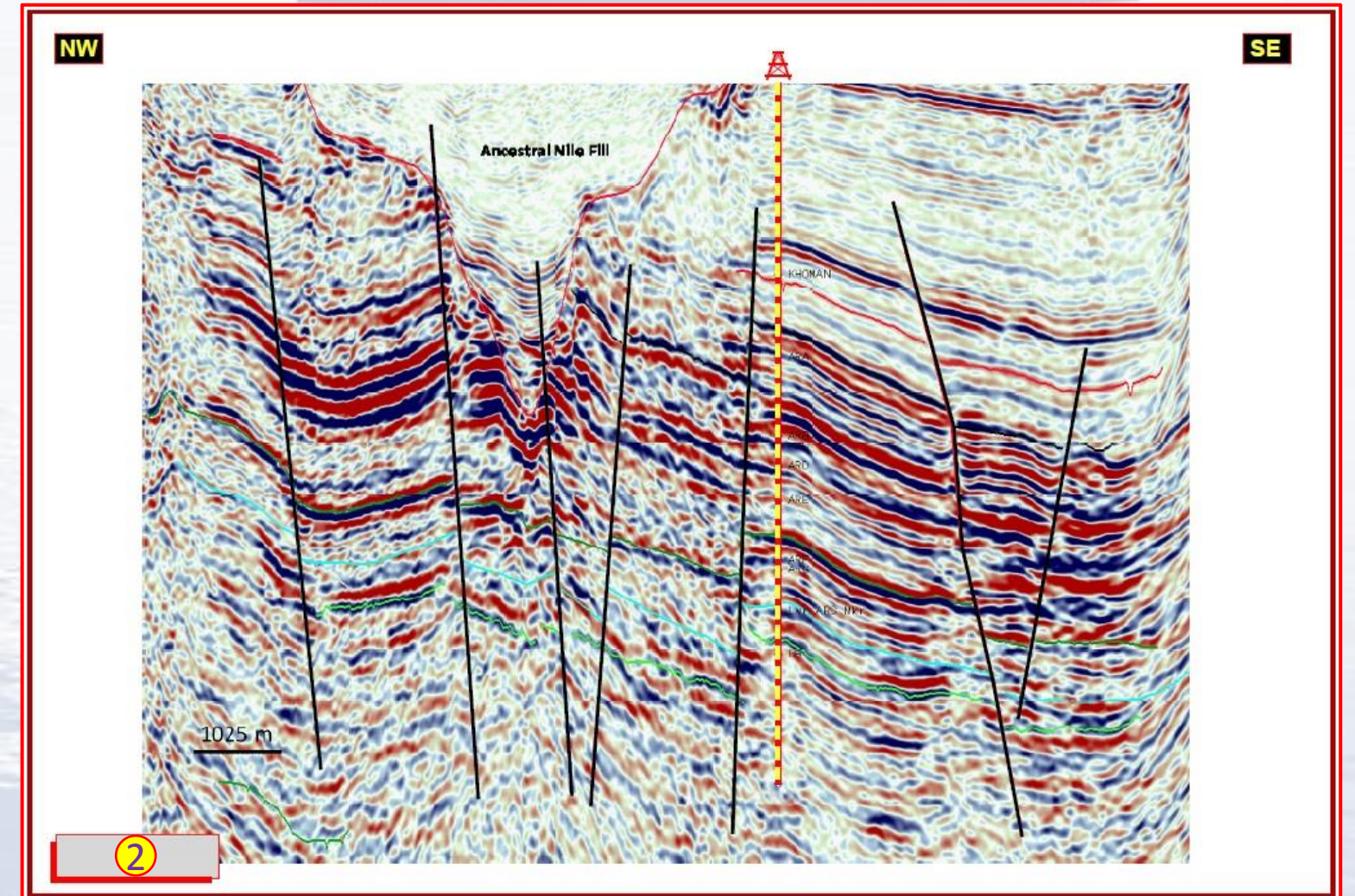
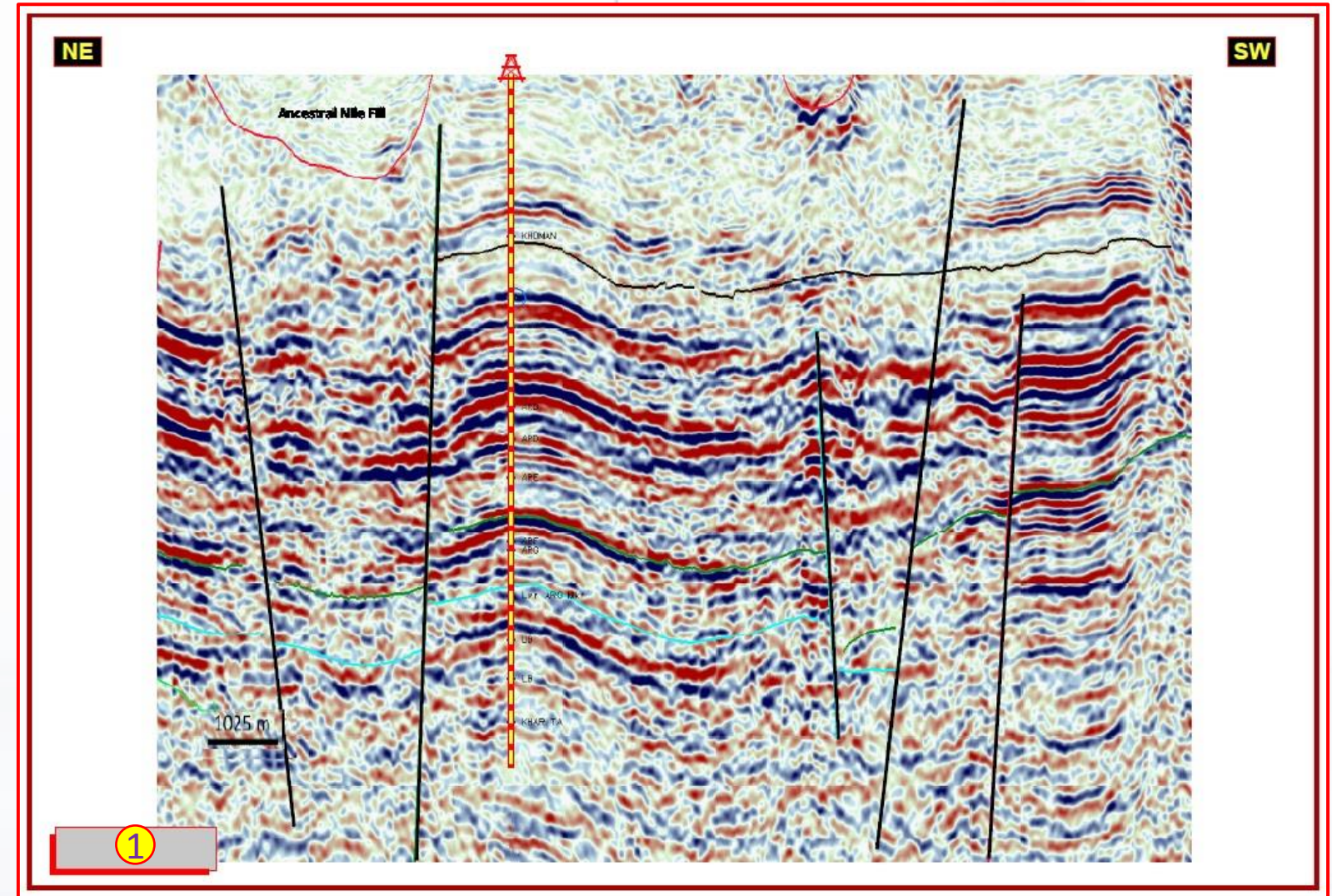
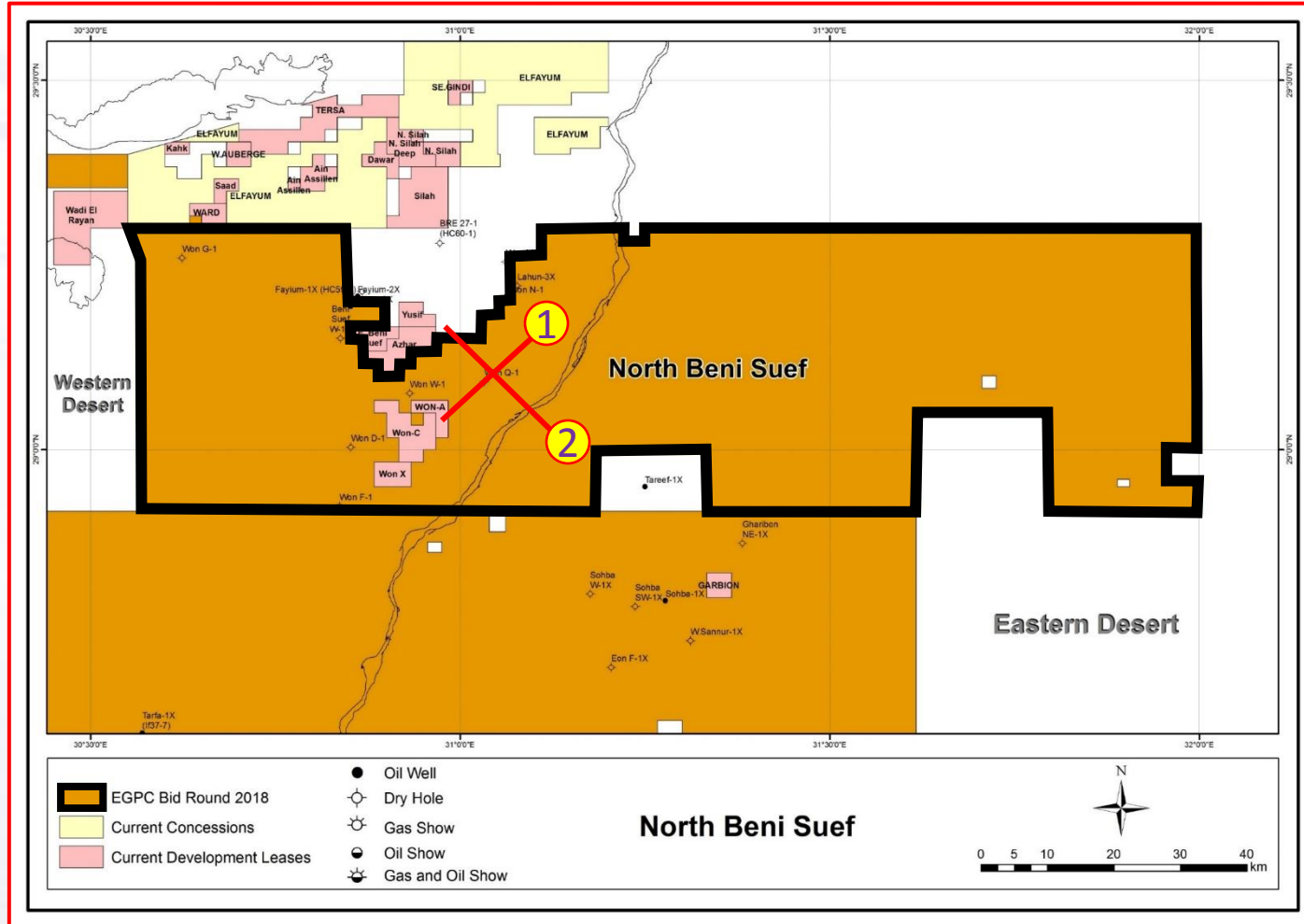
2D Seismic Survey : 3101 Km

3D Seismic Survey: 841 Km²

- ✓ Qarun West Nile Beni Sueif 2004 & 2008: 661 Km²
- ✓ Qarun Benisueif East 2006: 180 Km²



Seismic Model



Petroleum System

Petroleum System Elements & Hydrocarbon Plays

➤ **Basin** : The block is located within the Beni Suef Basin and close to Gindi Basin.

➤ **Sources:**

The rock analysis in nearby areas shows that the source rock, is A/R "F" Cretaceous.

➤ **Reservoirs:**

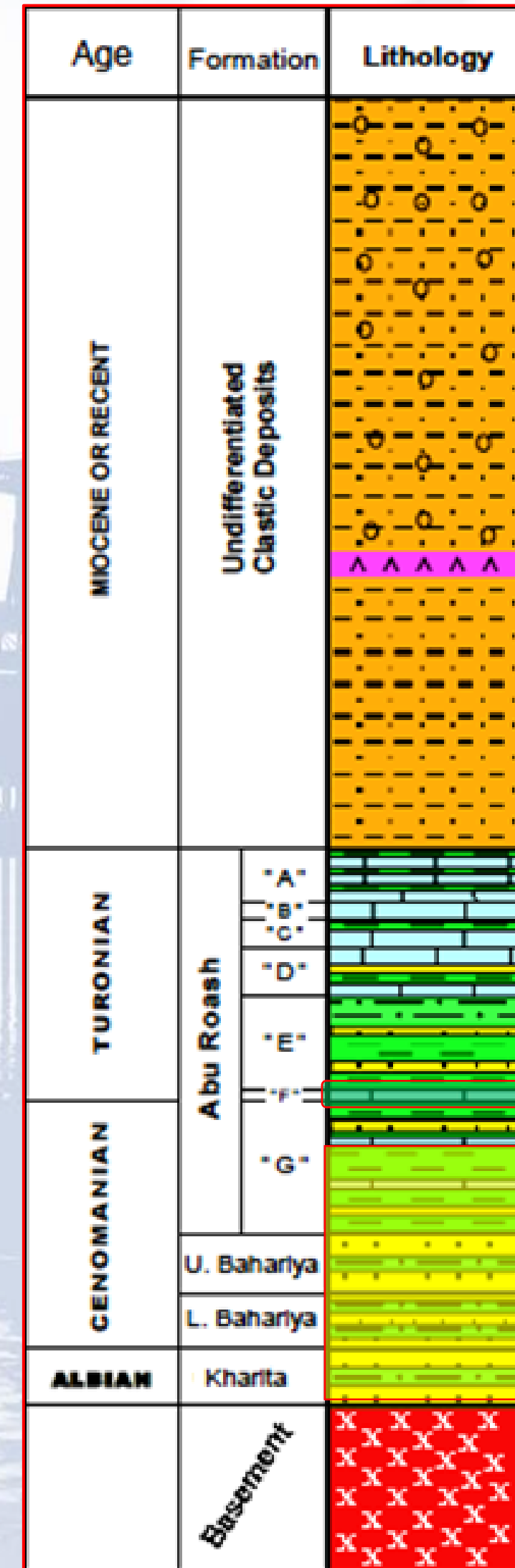
Main reservoir in block, U. Cretaceous age (AR "G" member, Bahariya and Kharita).

➤ **Seal:**

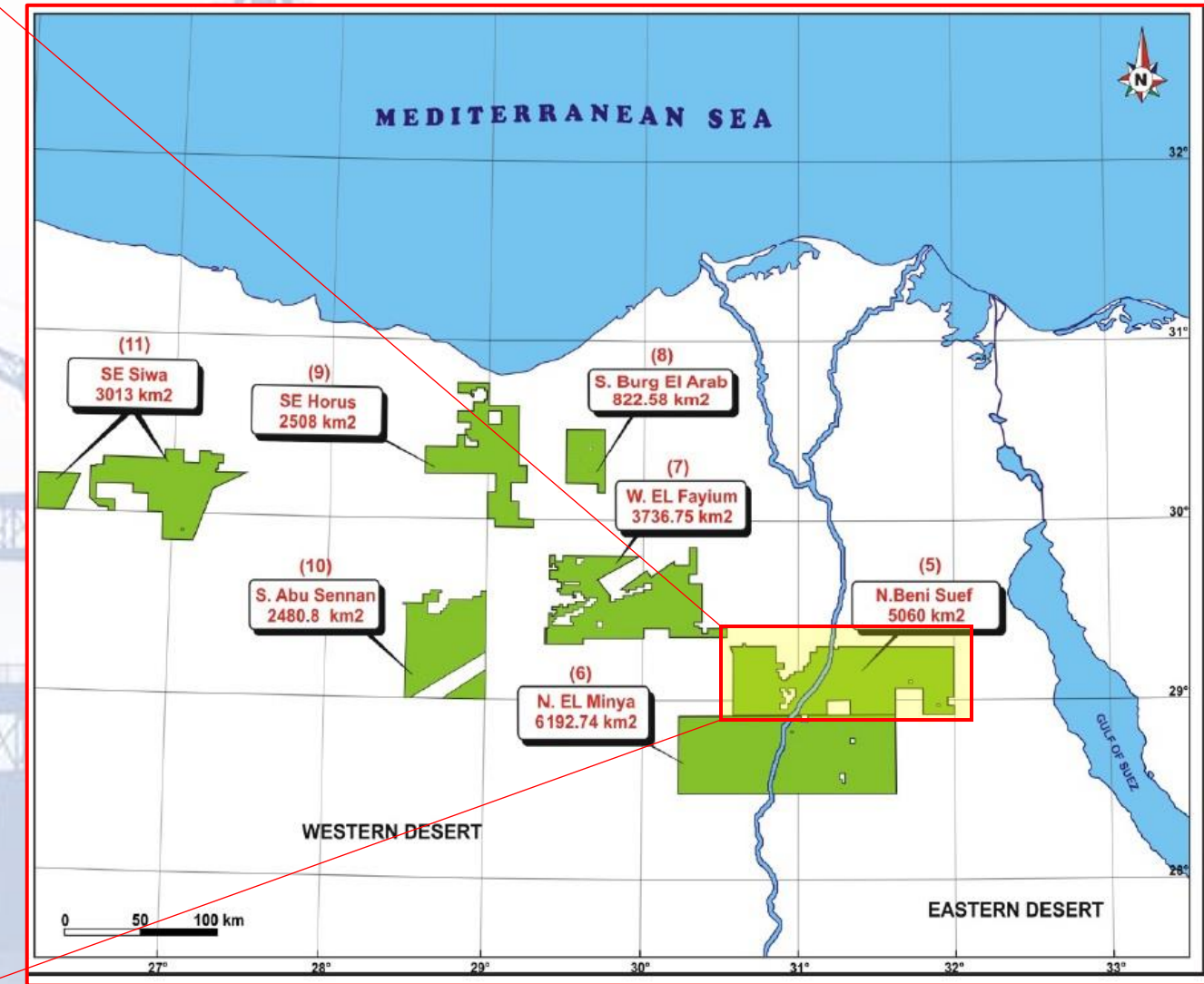
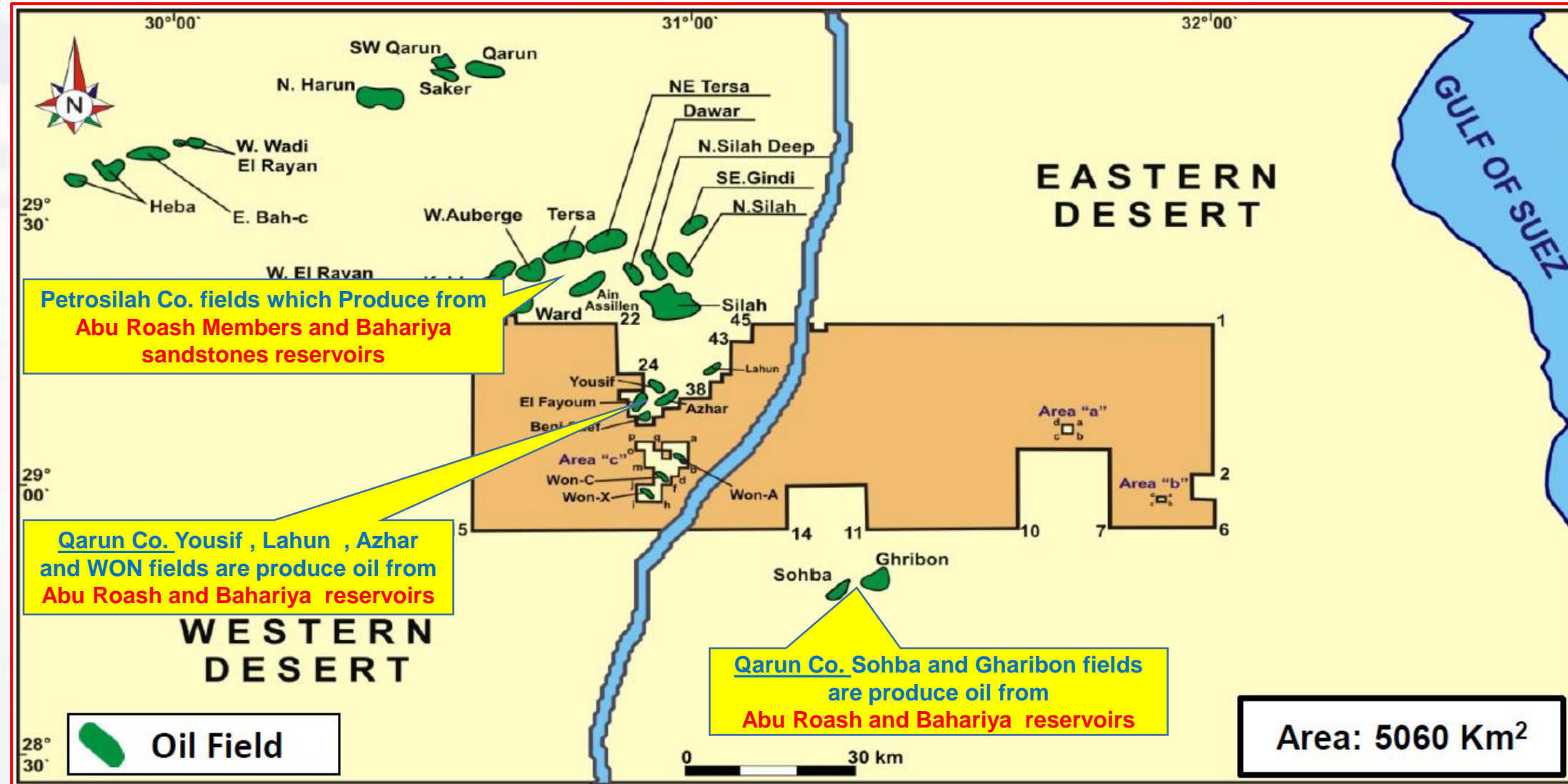
Main top seal for A/R "G" reservoirs is the A/R "G" shales and AR "F" carbonates which provide also good lateral seals for the up thrown A/R "G" reservoirs.

➤ **Trap Mechanism:**

Mainly structure Trap in addition to Structural/ Stratigraphic trap.



Nearby Fields & Productivity



Nearby Fields:

The block is surrounded by a number of oil fields which include Lahun , Yousif , Beni Suef , Azhar , West of Nile oil fields and bounded to the North by Silah, S. Silah, Ward and Kahk; and Sohba & Gharibon to the Southeast of Nile Valley.